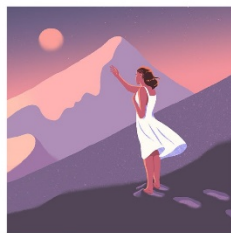
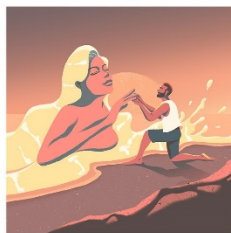
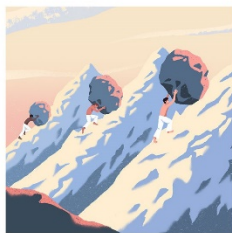


Master VOICES
TED SPERLING
ARTISTIC DIRECTOR

MYTHS AND HYMNS



A Theatrical Song
Cycle in a Four-Part
Digital Series
CHAPTER 1

MYTHS and HYMNS

Chapter 1: Flight



Music and Lyrics by
ADAM GUETTEL

Additional Lyrics by
Ellen Fitzhugh

Orchestration by
Don Sebesky and Jamie Lawrence

New Choral Arrangements by Ted Sperling

Production Conceived, Supervised, and Conducted by
TED SPERLING

Orchestra

Chuck Wilson, Dan Willis, John Winder: *woodwinds*
Larry Lunetta: *trumpet* Norbert Goldberg: *drums*
Douglas Romoff: *bass* Todd Ellison: *piano*
Steve Bargonetti: *guitar* Adam Guettel: *guitar (Pegasus)*
Ted Sperling: *conductor/violin/keyboard*

Production Team
Derril Sellers/SpotCo, *Editing and Production*
Jamie Lawrence, *Audio Mixing and Mastering*
Andrew Feyer, *Chorus Audio Engineer*
SpotCo, *Advertising/Marketing/Social Strategy*

*This performance is funded in part by the Doris Duke Charitable Foundation
and The Roger Rees Fund for Musical Theater, as well as:*



Council on
the Arts



NEW YORK
FOUNDATION
FOR ELDERCARE

NYC Cultural
Affairs



HOWARD GILMAN
FOUNDATION

FLIGHT

Prometheus

Anderson & Roe, Piano Duo

(Anderson & Roe Underwritten by Susan and Elihu Rose)

Greg Anderson, *Arranger and Director*

Saturn Returns: The Flight

Joshua Henry, Soloist

MasterVoices

Ted Sperling, *Director*

Icarus

Mykal Kilgore, Icarus

Norm Lewis, Daedalus

MasterVoices

Sammi Cannold, *Director*

(Ms. Cannold Underwritten by Ellen B. Nenner)

Mary McGowan, *Associate Director*

Xavier Clark, *Associate Director*

Lucy Mackinnon, *Designer*

Migratory V

Julia Bullock, Soloist

(Ms. Bullock Underwritten by Sarah Billingham Solomon)

Renée Fleming, Soloist

(Ms. Fleming Underwritten by Ellen F. Marcus and Bruce Horten & Aaron Lieber)

Kelli O'Hara, Soloist

(Ms. O'Hara Underwritten by Zita Ezpeleta and Kewsong Lee)

MasterVoices

Lear deBessonnet, *Director*

Danny Mefford, *Co-Creator*

Yazmany Arboleda, *Co-Creator and Illustrator*

Cloud Chatanda, *Animator*

Pegasus

Annie Golden, Narrator

Jose Llana, Bellerophon

Capathia Jenkins, Pegasus

Elizabeth Stanley, Gadfly

Ted Sperling, *Director*

Steven Kellogg, *Illustrations*

Jesus, the Mighty Conqueror

Take 6, Soloists

MasterVoices

Mark Kibble, *Arranger*

Khristian Dentley, *Director*



MEET THE ARTISTS

TED SPERLING, *Conductor*

One of today's leading musical artists, Tony Award-winning Maestro Ted Sperling is a classically trained musician whose 35-year career has spanned from the concert hall and the opera house to the Broadway stage. He has led such symphony orchestras as the New York Philharmonic, San Francisco Symphony, Chicago Symphony, Boston Pops, the Iceland Symphony, Czech National Symphony, and BBC Concert Orchestra. He has also served as Music Director and conductor for the revival of *My Fair Lady* at Lincoln Center Theater, and won the 2005 Tony and Drama Desk Awards for his orchestrations of Adam Guettel's *The Light in the Piazza*, for which he was also Music Director. With MasterVoices, Maestro Sperling has led acclaimed productions of rarely-heard gems as both director and conductor, including the 2018-19 season's sold-out three-performance run of *Lady in the Dark* at New York City Center. Mr. Sperling graduated *summa cum laude* from Yale University, and received the Faculty Prize at The Juilliard School. He currently teaches orchestral playing and conducting at NYU.

ADAM GUETTEL, *Composer & Lyricist*

Adam Guettel is a composer/lyricist living in New York City. His upcoming musical, *The Days of Wine and Roses*, will have its first production on Broadway next season. Another new musical, *Millions*, is also slated for production soon. In 2019 he was nominated for a Tony Award for his score to the hit Broadway play, *To Kill a Mockingbird*. His musical, *The Light in the Piazza*, premiered on Broadway in April 2005 and went on to receive six 2005 Tony Awards including two for Mr. Guettel – Best Original Score, Best Orchestrations, and a Grammy nomination for best cast recording. *The Light in the Piazza* also received five Drama Desk Awards, including two for Mr. Guettel – Best Music and Best Orchestrations. Accolades for Mr. Guettel include the Stephen Sondheim Award (1990), the ASCAP New Horizons Award (1997), and the American Composers Orchestra Award (2005). He received an honorary doctorate from Lehman College in 2007. In 2019 he was made an honorary member of The Royal Academy of Music in London.

ELLEN FITZHUGH, *Additional Lyrics*

Ellen Fitzhugh has received Tony (Original Score, *Grind*) and Drama Desk (Outstanding Lyrics, *Grind*) award nominations, as well as an Emmy nomination (Outstanding Achievement in Music and Lyrics, *Shining Time Station*/PBS), and written lyrics with numerous film score composers, including the renowned Henry Mancini. She is also the lyricist of several Off-Broadway musicals, including *Herringbone* ('81); *Diamonds* ('84); *The Griffin and the Minor Canon* ('88); *Paper Moon* ('93); *Luck, Pluck, and Virtue* ('95); *Don Juan DeMarco* ('98); *Paradise Found* (2010); and *Just One "Q"* (librettist, 2016). She also wrote lyrics for the Disney film,

The Great Mouse Detective ('86) and the video, *The Brave Little Toaster Goes to Mars* ('98). Ellen's recent activities include two new pieces, as librettist for *Broadbend, Arkansas* for Transport Group, with Ted Shen, and *Los Otros* for Inner Voices, with Michael John LaChiusa.

DON SEBESKY, Orchestration

Don Sebesky is one of the most respected composer-arrangers in music today. His sensitivity and versatility have enabled him to produce an enormous body of work, ranging from jazz to symphonic to pop. Through his many collaborations, he has received 31 Grammy nominations (3-time winner), 3 Tony nominations (winner 2000), 2 Drama Desk Awards, 3 Emmy nominations, and 4 Clio Awards. He has worked with the London and Chicago Symphonies, Boston Pops, New York Philharmonic, Royal Philharmonic of London, and the Toronto Symphony. Theater credits include *Porgy and Bess* (London), *Sweet Charity*, *Kiss Me Kate* (2000 Tony Award), *Bells Are Ringing*, *Cyrano*, *Will Rogers Follies*, and *Sinatra At Radio City*. Besides Sinatra, Don has arranged for hundreds of other recording artists including [Streisand](#), [Bennett](#), [Buble](#), [Liza](#), [Seal](#), [Prince](#), and many more. Recordings include nine under his own name, all of which were Grammy nominated. Sebesky is the author of the orchestration text book, *The Contemporary Arranger*.

JAMIE LAWRENCE, Orchestration

Jamie Lawrence's compositions and arrangements have been honored with five Emmy Awards and ten Emmy nominations. He most recently scored the upcoming musical feature film headed to SXSW, *Best Summer Ever*. Jamie produced and orchestrated the score for the HBO documentary *Arthur Miller: Writer*, directed by Rebecca Miller and her other films, *Maggie's Plan*, *The Private Lives of Pippa Lee*, and *The Ballad of Jack and Rose*, starring Daniel Day Lewis. He has scored numerous documentary films -- many of them for HBO: *Death on a Factory Farm*, *The Alzheimer's Project - "Momentum in Science"*, and *Dealing Dogs*. Jamie is the Music Director and principal arranger for the Tony Awards broadcast and has written all the original music for the show for the past fifteen years. As an orchestrator he has penned arrangements for numerous musical luminaries: Jessye Norman, Quincy Jones, Smokey Robinson, Audra McDonald, and Herbie Hancock.

Prometheus

ANDERSON & ROE, Piano Duo

Known for their adrenalized performances, original compositions, and notorious music videos, GREG ANDERSON and ELIZABETH JOY ROE are revolutionizing the piano duo experience for the 21st century. Described as "the most dynamic duo of this generation" (*SF Classical Voice*), "rock stars of the classical music world" (*Miami Herald*), and "the very model of complete 21st-century musicians" (*The Washington Post*), the duo aims to make classical music a relevant and powerful force

around the world. Their five critically acclaimed albums have topped the Billboard Classical Charts, while their Emmy-nominated, self-produced music videos have been viewed by millions on YouTube and at international film festivals. Since forming their musical partnership in 2002, Anderson & Roe have toured extensively worldwide as recitalists and orchestral soloists; appeared on NPR, MTV, PBS, and the BBC; and served as co-hosts on *From the Top* and the medici.tv webcast of the 15th Van Cliburn International Piano Competition.

GREG ANDERSON, *Arranger & Director*

In pursuit of his mission to make classical music a relevant and powerful force in society, Greg Anderson has developed a multi-faceted career as a pianist, composer, and filmmaker. His exploits have attracted the attention of PBS, MTV, the *Today Show*, and NPR's *A Prairie Home Companion* and *All Things Considered*, and he is profiled in Nick Romeo's book *Driven*. Greg has toured extensively worldwide as a soloist, duo pianist, and chamber musician, while his compositions and arrangements have appeared on the Universal, Sony, and EMI record labels and at venues such as Carnegie Hall, the Rose Bowl, and Beijing's National Center for the Performing Arts. As a filmmaker, Greg has directed and edited over 50 music videos for the Tippet Rise Art Center and the Anderson & Roe Piano Duo; his films have appeared at international film festivals, earned an Emmy nomination, and received over 20 million views online.

Saturn Returns: The Flight

JOSHUA HENRY, *Soloist*

Joshua Henry can currently be seen starring in *See* for Apple TV. He most recently appeared Off-Broadway in *The Wrong Man* (MCC) for which he received Drama Desk, Lucille Lortel and Outer Critics Circle awards nominations. Joshua starred on Broadway as the iconic Billy Bigelow in the revival of *Carousel* for which he received a coveted Tony and Grammy nomination. Just prior to *Carousel*, Joshua closed his run as Aaron Burr in *Hamilton: Los Angeles*. Joshua has also starred on Broadway in the Tony-nominated musical *Shuffle Along*. Prior to that, Joshua was Tony-nominated for his star turn as Flick in *Violet*. He received Drama Desk, Outer Critics Circle and Drama League Award nominations for his thrilling, show-stopping performance. He was previously nominated for a Tony Award for his starring role in Susan Stroman's *The Scottsboro Boys*. Other Broadway credits: *Porgy & Bess* and Green Day's *American Idiot*. Upcoming: *Tick, Tick...Boom* (Netflix/ Imagine).

Icarus

MYKAL KILGORE, *Icarus*

Mykal Kilgore is an award-winning actor and a Grammy and NAACP Image Award nominated singer/songwriter. His debut album, *A Man Born Black*, is a gumbo of

American roots music and modern feels that highlight his ability to go from Broadway Showtune storytelling to Soul and Jazz scatting to Gospel. Mykal was most recently seen in his online special, *Mykal Kilgore Live... on the innanets*. Theatre credits include The Witch in *Into The Woods* at Barrington Stage Company, The Who's *Tommy* at The Kennedy Center, *Songs For A New World* at Encores! Off-Center, *Motown the Musical* and *Hair* on Broadway, as well as *Book of Mormon* (1st National Tour.) He has also appeared in TV/Film with roles in NBC's *Jesus Christ Superstar* and *The Wiz Live* and *Collateral Beauty*. Mykal's racked up 10M plus views on social media with his videos including his viral *Reclaiming My Time* video. #blacklivesmatter #translivesmatter #loveoneanother MYKALKILGORE.COM

NORM LEWIS, *Daedalus*

Norm Lewis is currently starring in the Netflix film *Da 5 Bloods* and Hulu's *Mrs. America*. He was also in the NBC special, *Jesus Christ Superstar Live in Concert!*, the Broadway revival of *Once on This Island* and starred in the Off-Broadway production of *Sweeney Todd: The Demon Barber of Fleet Street*, receiving the AUDELCO Award. In 2014, Mr. Lewis made history as *The Phantom of the Opera*'s first African American Phantom on Broadway. He was nominated for a 2012 Tony award for his portrayal of Porgy, opposite Audra McDonald. Besides Mr. Lewis' countless appearances on television and film, he can be seen on PBS in the Live From Lincoln Center production of *Show Boat* (directed by Ted Sperling), and *Norm Lewis: Who Am I?* Mr. Lewis is a proud founding member of Black Theatre United, an organization dedicated to help protect Black people, Black talent and Black lives of all shapes and orientations in theatre and communities across the country.

SAMMI CANNOLD, *Director*

Sammi Cannold is a director who is one of Forbes Magazine's *30 Under 30* in Hollywood & Entertainment, class of 2019. Recent theater credits include *Evita* (New York City Center), *Endlings* (New York Theatre Workshop, A.R.T.), *Ragtime* on Ellis Island, *Violet* on a moving bus (A.R.T.), and *Allegory* (La Jolla Playhouse WOW). Upcoming projects include *Carmen* (with MasterVoices), a documentary film, and a feature film. Associate director credits include the Broadway production of *Natasha, Pierre...* (dir. Rachel Chavkin). Sammi has also served as an Artistic Fellow at the A.R.T., a member of Cirque du Soleil's Creative Cognoscenti, and a Sundance Institute Fellow and developed work with Playwrights Realm, The Eugene O'Neill Theater Center, New York Stage and Film, Cirque du Soleil, and Nickelodeon. She holds a B.A. from Stanford University and an M.A. from Harvard University. www.sammicannold.com. @sammi.cannold

XAVIER CLARK, *Associate Director*

Xavier Clark is a multidisciplinary theatre artist, born and raised in Turkey. Xavier has worked at many theaters across the country both as a director and an actor, including: Williamstown Theatre Festival, La Jolla Playhouse, Hudson Valley Shakespeare Festival, Stella Adler Studio, Ojai Playwrights Conference, The Civilians and more. He studied at RADA, NYU Tisch (BFA), and UC San Diego (MFA).

MARY MCGOWAN, Associate Director

Current: Special Assistant to the Artistic Director (Diane Paulus) at the American Repertory Theater (A.R.T.) at Harvard University, Assistant Directing: *1776* (A.R.T.), *Evita* (New York City Center), *ExtraOrdinary* (A.R.T.), Regional: Chautauqua Theater Company, Syracuse Stage, L.A. Theatre Works. Education/Training: Shakespeare's Globe (2015); BFA, Syracuse University.

LUCY MACKINNON, Designer

Lucy Mackinnon is a video and projections designer. Broadway credits include *Jagged Little Pill*, *The Rose Tattoo*, *Lifespan of a Fact*, *Six Degrees of Separation*, and Deaf West's revival of *Spring Awakening*. Recent off-Broadway credits include *Unknown Soldier* (Playwrights Horizons), *White Noise* (The Public Theater), *The Mother* (Atlantic Theater Company), and *YEN* (MCC). As a graphic artist, she has contributed to video installations at The New York Historical Society and The National Center for Civil and Human Rights.

Migratory V

JULIA BULLOCK, Soloist

One of *Musical America's* 2021 "Artists of the Year," American classical singer Julia Bullock is "a musician who delights in making her own rules" (*New Yorker*).

Combining versatile artistry with a probing intellect and commanding stage presence, she has, in her early 30s, already headlined productions and concerts at preeminent arts institutions around the world. Also an innovative curator in high demand, she holds notable positions including opera programming host of the new broadcast channel All Arts, 2018-19 Artist-in-Residence at New York's Metropolitan Museum of Art, 2019-20 Artist-in-Residence of the San Francisco Symphony and 2020-22 Artist-in-Residence of London's Guildhall School. Her growing discography features Grammy-nominated accounts of *West Side Story* and *Doctor Atomic*, which she recorded with the composer conducting the BBC Symphony Orchestra. Committed to integrating community activism with her musical life, Bullock is also a prominent voice for social consciousness and change.

RENÉE FLEMING, Soloist

Winner of four Grammy® awards and the US National Medal of Arts, Renée Fleming performs on the stages of the world's greatest opera house and concert halls, singing for momentous occasions from the Nobel Peace Prize ceremony to the Super Bowl. She earned a Tony Award nomination for the 2018 Broadway production of *Carousel*. In 2019, she appeared in London as Margaret in Adam Guettel's *The Light in the Piazza*, later bringing the acclaimed portrayal to Los Angeles and Chicago. As Artistic Advisor to the Kennedy Center for the Performing Arts, Renée launched a collaboration with the NIH examining the science connecting music, health, and the

brain. Last spring she premiered her own weekly live webinar, *Music and Mind LIVE*, with more than 650,000 views in 70 countries. Renée has recorded everything from complete operas and song recitals to jazz, indie rock, and the soundtracks of Best Picture Oscar winners *The Shape of Water* and *The Lord of the Rings: The Return of the King*. www.reneefleming.com

KELLI O'HARA, Soloist

Kelli O'Hara has established herself as one of Broadway's greatest leading ladies. Her portrayal of Anna in *The King and I* garnered her the 2015 Tony Award for Best Leading Actress in a Musical, along with Grammy, Drama League, Outer Critics, and Olivier nominations. Other Broadway credits include *Kiss Me Kate*, *The Bridges of Madison County*, *Nice Work If You Can Get It*, *South Pacific*, *The Pajama Game*, and *The Light in the Piazza* -- all receiving Tony nominations, along with Drama Desk, Drama League, and/or OCC nominations. She received the Drama League's Distinguished Achievement in Musical Theatre Award in 2019. She made her Metropolitan Opera debut in 2015. Kelli received an Emmy nomination for her work in *The Accidental Wolf*. Film/TV credits include *13 Reasons Why*, *All The Bright Places*, *Peter Pan Live!*, *Sex & The City 2*, *The Key to Reserva*, *Masters of Sex*, *The Good Fight*, *Blue Bloods*, *Numb3rs*, and *Car Talk*. Kelli is currently shooting the upcoming HBO series "The Gilded Age".

LEAR deBESSONET, Director

Lear deBessonnet is the new Artistic Director of Encores! at New York City Center. From 2012-2020, she worked at the Public Theater, where she founded the acclaimed Public Works program and served as Resident Director for 8 seasons. At the Public, she directed Disney's *Hercules*, *Miss You Like Hell*, *A Midsummer Night's Dream*, *Romeo and Juliet*, and the Public Works' productions of *The Tempest*, *The Winter's Tale*, and *The Odyssey* at the Delacorte. Other directing credits include *Good Person of Szechwan* starring Taylor Mac and Lisa Kron (The Foundry Theater/The Public), Suzan-Lori Parks' *Venus* (Signature Theater), *Pump Boys and Dinettes* (Encores! Off-Center) and *Big River* (Encores!). Her directing work has received an Obie Award, Lortel Award, Lilly Award, and multiple Drama Desk nominations.

DANNY MEFFORD, Co-Creator

Danny Mefford choreographed *Dear Evan Hansen* (Tony and Olivier, Best Musical) and *Fun Home* (Tony, Best Musical). His other Broadway credits are *Bridges of Madison County* and *Bloody Bloody Andrew Jackson*. His off-Broadway credits include *Good Person of Szechwan*, *Miss You Like Hell* and *February House*. He staged the theatrical sequences for *Rise* on NBC and makes dances for *Dickinson* on Apple+. For Shakespeare in the Park, he choreographed *Love's Labour's Lost* and *Much Ado About Nothing*. He has been nominated for Drama Desk, Astaire and Lortel Awards. B.S. University of Evansville, M.F.A. Brown/Trinity Consortium

YAZMANY ARBOLEDA, Co-Creator and Illustrator

Yazmany Arboleda (b. 1981) is a Colombian American artist based in New York City. An architect by training, Yazmany's practice focuses on creating "Living Sculptures," people coming together to transform the world through co-creation. Over the past two decades he has created public art projects with communities in India, Japan, Kenya, Tanzania, Uganda, South Africa, Afghanistan, Spain, Colombia and the United States. In 2020 Yazmany was appointed as the first Public Artist in Residence with New York City's Civic Engagement Commission. He has collaborated with Carnegie Hall, the Yale School of Management, and BRIC among others. He is a cofounder of [limeSHIFT](#), the [Future Historical Society](#), [Remember 2019](#), and the [Artist As Citizen Conference](#). He has lectured at UNC, MIT, and LPAC about the power of art in public space.

CLOUD CHATANDA, Animator

Cloud Chatanda was born in 1974 in Njombe, Tanzania, Cloud Chatanda is a visual artist specialized in illustration and paintings. Born the second child from a family of eight of the late captain and soldier, Augustino Chatanda, his family was reluctant in allowing him to pursue an art career. With encouragement from his teachers and fellow peers in school, he started doing illustrations and finally took the leap into working as an artist full time. Chatanda received his artistic training from Kinondoni Young Artist (KYA) in 1990. His illustrations have been used in Tanzania in several schoolbooks, magazines and newspapers, social campaigns and comics. He has exhibited his works at National Museum of Tanzania, Nafasi Art Space and Alliance Française in Tanzania and at Circle Art gallery in Kenya. He has also participated in the East African Biennale. Chatanda has accepted residencies at Kuona Trust in Nairobi and Zku in Berlin.

Pegasus

ANNIE GOLDEN, Narrator

Annie Golden considers herself the illegitimate child of the legitimate theatre, having been discovered on the Bowery fronting a rock band, and cast by Milos Forman as Jeannie in *Hair*, the 1978 film. Annie was an original cast member for five seasons of the award-winning Netflix series *Orange Is The New Black* as Norma Romano. She was also on HBO's *High Maintenance* as Bambie, which was written for her by the show's creators. On Broadway, she was last seen in *Violet*, and created the role of Georgie Bukatinsky in *The Full Monty*; Sondheim's original Squeaky Fromme in *Assassins*; and in the off-Broadway productions of *On The Town*; and *Little Shop of Horrors* as Audrey. Her other numerous film credits include *Twelve Monkeys*; *Baby Boom*; *Brooklyn Rules*; *Suddenly Seeking Susan*; *I Love You, Phillip Morris*; and *Miles*. Her television credits include *Law & Order*, *Cheers*, *Miami Vice*, and *Third Watch*. Annie was also in the original production of *Saturn Returns* at the Public Theater.

JOSE LLANA, *Bellerophon*

Jose Llana is thrilled to return to *Myths & Hymns*, originally titled *Saturn Returns*, having appeared in the 1998 premier at The Public Theater. Most recent: *The King of Siam* in Lincoln Center Theater's *The King & I* on Broadway and the US & UK National Tours. Best known for playing President Marcos in *Here Lies Love* at The Public Theater. Other Broadway: Chip Tolentino in *The 25th Annual Putnam Country Spelling Bee*, El Gato in *Wonderland*, Wang Ta in *Flower Drum Song*, Angel in *Rent*, and Jessie-Lee in *Streetcorner Symphony*. Other Off-Broadway; Orsino in *Twelfth Night* (Public), Adam in *Falling For Eve* (York), and Gabey in *On the Town* (Public). TV/Film: HBO's *Sex and the City* and *Hitch*. Two solo concerts for Lincoln Center's American Songbook Series, in 2015 and 2019. Albums: Cast albums and *Altitude*, based on his 2015 American Songbook Concert. @thejosellana www.josellana.com

CAPATHIA JENKINS, *Pegasus*

Capathia Jenkins is a founding member of Black Theatre United. Broadway: *Newsies*, *Martin Short-Fame Becomes Me*, *Caroline, or Change*, *The Look of Love*, *The Civil War*. Off-Broadway: Nora Ephron's *Love Loss and What I Wore*, (mis)Understanding *Mammy*, *The Hattie McDaniel Story*, (Drama Desk Nomination) *Caroline, or Change*, *Godspell*. Original Cast recordings: *Martin Short-Fame Becomes Me*, *Caroline, or Change*, *Godspell*, *Children of Eden*. Television: *30 Rock*, *the Practice*, *Law & Order*, *the Sopranos*, *Third watch*, *Law & Order-SVU*. Film: *Top Five*, *Musical Chairs*. Soloist for many symphony orchestras in the U.S. and abroad, including Cleveland Orchestra, Cincinnati Pops, Philly Pops, National Symphony, Hong Kong Philharmonic and Calgary Symphony. Soundtracks: Seasons 1&2 of *Smash*, *Nine*, *Chicago*, *Mission to Mars*, *Legally Blonde 2*. www.capathiajenkins.com www.blacktheatreunited.com

ELIZABETH STANLEY, *Gadfly*

Elizabeth Stanley stars in the leading role of Mary Jane Healy in the Broadway production of *Jagged Little Pill* featuring the music of Alanis Morissette. Stanley originated the role in its World Premiere at the American Repertory Theater in Boston and reprised it on Broadway where she has recently earned 2020 Drama Desk, Tony, and Grammy nominations for her performance. She previously originated the roles of Dyanne in *Million Dollar Quartet* and Allison in *Cry Baby*. Additional Broadway credits include the revival of *On the Town* (Drama Desk nom) and the Tony Award-Winning revival of *Company*. She also appeared in the First National Tours of *The Bridges of Madison County* and *Xanadu*. Off-Broadway credits include *Fucking A* (Signature), *Merrily We Roll Along* (PS Classics Cast Album). On television, Stanley can be seen in *NOS4A2*, *FBI*, *The Get Down*, *The Affair*, *Black Box*, *Made in Jersey*, *Fringe*, *The Chappelle Show*, and *PBS Great Performances – Company*.

STEVEN KELLOGG, *Illustrator*

Steven Kellogg is an author and illustrator, and, during the decades since 1963, when he graduated from the Rhode Island School of Design, he has published one hundred and thirty books. Forty years after his graduation, he received the college's annual

award for significant professional achievement, and also the Regina Medal for his lifetime contribution to children's literature. Among his books are: *The Island of the Skog*, *Snowflakes Fall*, *The Mysterious Tadpole*, *Paul Bunyan*, *Best Friends*, *If You Decide to Go to the Moon*, and *The Word Pirates*. During the years that he has been publishing children's books, Steven Kellogg has traveled to schools, libraries, and colleges in all fifty states presenting programs that promote and celebrate reading. He is a board member of the National Children's Book and Literacy Alliance.

Jesus, the Mighty Conqueror

TAKE 6, Soloists

Take 6 (Claude McKnight, Mark Kibble, Joel Kibble, Dave Thomas, Alvin Chea and Khristian Dentley), heralded by Quincy Jones as the “baddest vocal cats on the planet,” is the quintessential a cappella group and model for vocal genius. Six virtuosic voices united in crystal clear harmony, against a backdrop of syncopated rhythms, innovative arrangements, and funky grooves that bubble into an intoxicating brew of gospel, jazz, R&B, and pop. With praise from such luminaries as Ray Charles, Stevie Wonder, Brian Wilson, Ella Fitzgerald and Whitney Houston, Take 6 is recognized as the pre-eminent a cappella group in the world.

MARK KIBBLE, Arranger

Mark Kibble is the first tenor for the singing group Take 6, which he formed along with Claude McKnight, in 1980. Mark has played an important role in the development of the group's sound not only as a vocalist but as an arranger, and having come up with the Take 6 sound, they have nicknamed him “the Markitect”. During their career the group has sold millions of recordings. Mark has worked with and produced many, many artists... from Quincy Jones to Stevie Wonder, Ray Charles, David Foster, Whitney Houston, Donnie McClurkin, Eliane Elias, and countless others. Mark with Take 6 has received many music awards including 10 Grammys (8 official), 10 Doves, 2 Stellar awards to name just a few. Mark won his own personal Grammy in 2019 for an arrangement to top it all off. Mark now resides in Nashville TN where he and his brother Joey own a recording studio.

KHRISTIAN DENTLEY, Director

Though Khristian Dentley is mostly known for his role as the resident baritone in the incomparable vocal group TAKE 6, he is quickly becoming a content creation juggernaut all his own. Since the pandemic began, his video production company, Dentleyboy Production House, has exploded as he began partnering with independent artist needing ways to recreate themselves in the absence of their normal traveling gigs. He now also serves as the Creative Director of C4 Social, a thriving Orlando based media marketing firm where he helps create effective marketing content for companies that lead in their space. From music production to video production, Khristian is a one stop shop offering high quality entertainment value to every client he serves.

MASTEROICES

MasterVoices (formerly The Collegiate Chorale) was founded in 1941 by legendary American choral conductor Robert Shaw and has been under the artistic direction of Tony Award-winner Ted Sperling since 2013. Known for its versatility, the group's repertoire ranges from choral masterpieces and operas in concert to operettas and musical theater. It is also known for highly theatrical performances of rarely heard works such as *Lady in the Dark* by Kurt Weill and Ira Gershwin, Scott Joplin's *Treemonisha* and Rossini's *Moïse et Pharaon*. As the country's first interracial and interfaith chorus, the group performed at the opening of the United Nations and has sung and recorded with esteemed conductors including Arturo Toscanini, Leonard Bernstein and Zubin Mehta. Concerts regularly feature world-class soloists including Anthony Roth Costanzo, Bryn Terfel, Deborah Voigt, Eric Owens, Kelli O'Hara, and Victoria Clark, along with collaborations with such creative minds as Vogue Editor-at-Large Hamish Bowles and acclaimed choreographer Doug Varone. Roger Rees was the group's Artistic Associate from 2003–2015.

MASTEROICES BOARD OF DIRECTORS

Juliana Chen, *Co-Chair*

Deborah F. Stiles, *Co-Chair*

Ellen F. Marcus, *Vice-Chair*

Susan Shine, *Vice-Chair*

Elizabeth Tunick, *Secretary*

Lois Conway, *Treasurer*

Martina Arroyo

Susan L. Baker

Susan H. Dramm

Kenneth H. Hannan, Jr.

Matthew D. Hoffman

Deborah Innes

Robert Jurgrau

Richard J. Miller

Ellen B. Nenner

Bruce Patrick

Lisa Rubin

Adèle K. Talty

Lauren Tucker

Directors Emeriti

Nancy Dale Becker

Robert Becker,

In Memoriam

Anna de Peyster

George J. Grumbach Jr.

William H. Mann,

In Memoriam

James Marcus,

In Memoriam

Christie Salomon

ADVISORY COUNCIL

Norman S. Benzaquen

André Bishop

Sammi Cannold

Christopher Clark

Victoria Clark

Josh Cogswell

Amber Efé

Rick Elice

Martin Engstroem

Judith Messina Fleischer

Nathan Gunn

Steve Novick

Kelli O'Hara

Alan Pierson

Bruce Pomahac

Matthew Principe

Bartlett Sher
Ira Siff
Sarah Billingham Solomon
Daisy Soros

Bernard Telsey
Deborah Voigt
Kim Wiley-Schwartz
Judy Francis Zankel

SINGERS COUNCIL

Susan Shine, *President*
Ronny Viggiani, *Vice President*
Sybil H. Pollet, *Secretary*

Marsilia Boyle
Gerilyn Brewer
Jan Constantine
Al Daniel
Mary Fan
Miriam Levy
Luisa Lyons
Ron Meyers
Judith Oringer

Andrei Pierre
Deb Poppel
Vivianne Potter
Eileen Richter
Lisa Rubin
Costas Tsourakis
Lauren Tucker
Stephen Weber

MASTERSVOICES ADMINISTRATION

Ted Sperling, *Artistic Director*
Jennifer Collins, *Executive Director*
Julie Morgan, *Associate Conductor & General Manager*
Christopher Judd, *Development Manager & Artistic Associate*
Geneva Lyman, *Marketing & Engagement Coordinator*
Victor Velazquez, *Artistic & Operations Assistant*
Rachel Colbert, *Development Consultant*
Pascal Nadon, *Publicist*
James Bonkovsky, *Institutional Giving Manager*

MASTERSVOICES CHORUS

Adèle Talty
Al Daniel
Amanda Weiss
Angela Milner
Arlene H. Berrol
Becca Hare
Betsey Steeger
Bonnie Rosenberg
Bruce Patrick
Carey White
Carol-Marie Labozzetta
Cathy Friedman

Chris Smeall
Clelia Parisi
Daniel Ryave
Deb Poppel
Deborah Innes
Diann Witt
Edsel Romero
Eileen Richter
Emy Zener
Gerilyn Brewer
Hannah Livant
Helen Shin

Jackie Berliant
Jan Constantine
Jennifer Bell
Jennifer Daure
Jessica DeGennaro
Jill Melanie Wirth
Joan Harris
Jodi Greenspan
John Sabatos
John Van Antwerp
Joseph Zimmerman
Judith Oringer

Julie Baraz
Katherine Eberenz
Katrina Fisher
Ken Moore
Kimberly Barrios
Kit Smyth Basquin
Lauren Tucker
Lisa Rubin
Luisa Lyons
Marsilia Boyle
Maria Lane
Maria Lopez
Mark Ahramjian

Mark Spergel
Mary Fan
Michael Boyas
Nancy Batterman
Nancy Good
Nicole Fernandez-Coffaro
Niko Rissi
Nina Hennessey
Robert Reichstein
Ronny Viggiani
Samantha Kahn
Shelly Nelson
Sophia Pettaway

Stephen Weber
Steve Eisdorfer
Sue Dramm
Susan Shine
Susan Stumer
Sybil Pollet
Tammilyn Kim
Thomas Hom
Valerie Blechar
Victor Velazquez
Vivianne Potter

MASTERVOICES SUPPORTERS

MYTHS AND HYMNS SCREENING EVENT SUPPORTERS

Project Sponsors:

Susan Baker and Michael Lynch, Jan Constantine, Lois Conway, Robert Jurgrau and Marc Gollub, Ellen F. Marcus, Bruce Patrick, Adèle K. and John Talty

Project Hosts:

Virginia N. and Randall J. Barbato, Kit Smyth Basquin, Gerilyn Brewer and Henry Mueller, Noreen and Ken Buckfire, Juliana Chen, Susan Dramm, Ann Fabian and Christopher Smeall, Cathy J. Friedman, Matthew D. Hoffman and Donald R. Crawshaw, Kelly and André Hunter, Deborah Innes, Bruce C. Johnson, Lorraine LaHuta, Cara Lown, John Kenneth Moore, Ellen B. Nenner, Lisa Rubin and Dr. Carl Mankowitz, Gerald W. Richman, Nancy and Ernst Rothe, Christie C. Salomon, Susan Shine, Judith and Morton Sloan, Betsey Steeger, Deborah Stiles, Elizabeth Tunick, Dane Twining and Stephen Scanniello, Kara Unterberg, Ronny Viggiani and Michael Marino

MASTERSVOICES SEASON SUPPORTERS

MASTERSVOICES MAESTRO'S CIRCLE

LEADER (\$50,000 and above)

Susan Baker and Michael Lynch
Roxanne Brandt
Rick Elice
Mr. and Mrs. Kenneth H.
and Yvonne S. Hannan

Howard Gilman Foundation
Ellen F. Marcus
Ellen B. Nenner
Bruce Patrick

CONDUCTOR (\$25,000-\$49,999)

Lois Conway
 Donald R. Crawshaw and
 Matthew D. Hoffman
 Doris Duke Charitable Foundation

Robert Jurgrau and Marc Gollub
 Deborah F. Stiles
 Adèle K. and John Talty
 Susan S. and Kenneth L. Wallach

BENEFACTOR (\$10,000 - \$24,999)

Kit Smyth Basquin
 Nancy Dale Becker
 Gerilyn Brewer and Henry Mueller
 Juliana Chen
 Con Edison
 Jan Constantine
 Zita Ezpeleta and Kewsong Lee
 Cathy J. Friedman and Thomas R.
 Feyer
 Antonia and George Grumbach
 Himan Brown Charitable Trust
 Deborah L. Innes
 Lawrence Madison
*In honor of Julie Morgan and
 Jennifer Collins*

Morton Williams Supermarkets
 National Endowment for the Arts
 NYC Department of Cultural Affairs
 New York Foundation for Eldercare
 Dr. Robert Reichstein
 Lisa Rubin and Dr. Carl Mankowitz
 Christie C. Salomon
 Susan Shine
 Judith and Morton Sloan
 Sarah and Howard Solomon
 Barry Stewart and Stephanie Elliott
 The Gilder Foundation
 The Hargrove Pierce Foundation
 Elizabeth S. Tunick

CIRCLE MEMBER (\$5,000 - \$9,999)

Ann and Gordon Getty Foundation
 Rima Ayas and Ronald Moore
 Gini and Randy Barbato
 Marsilia Boyle
 Josh Cogswell and Justin Daniel
 Colgate-Palmolive ICE Fund
 Jennifer Collins
 Jennie and Richard DeScherer
 Elayne and Howard Friedman Fund
 Nancy and Neil Humphreys
 Kelly and Andre Hunter
In honor of Adèle K. Talty

Fern K. Hurst
In honor of Lois Conway
 Jephson Educational Trust
 Karen and Kevin Kennedy
 Richard and Carol Miller
 Samir Nikocevic
 Pfizer Foundation
 Deb Poppel
 Susan and Elihu Rose
 The Arthur and Mae Orvis Foundation
 Dane Twining and Stephen Scanniello

MASTERSVOICES PATRON PROGRAM**PATRON** (\$2,500-\$4,999)

Henry and Karin Barkhorn
 Arlene Berrol
 John A. Bult and Oliver Chen
In honor of Matthew Hoffman
 Ann Fabian and Christopher Smeall
 David and Karen Fleiss

Beth and Gary Glynn
 Mr. Andrew J. Goffe and Mr. Jeff Levin
 Molly K. Heines and Thomas J.
 Moloney
 Bruce Horten and Aaron Lieber
In honor of Ellen Marcus

Andrew Kaplan & Kate Winship
Kaplan
Nancy Karch
Priscilla Kauff
Enid and Robert Kay
Lorraine Lahuta
Dayna K Langfan and Lawrence Heller
Miriam Levy
Cara Lown
Judy Messina
John Kenneth Moore
Marta and Fernando Nottebohm
Rachel Pront

ASSOCIATE (\$1,000-\$2,499)

Lorraine and Curt Anastasio
In honor of Lisa Rubin
Carol Atkinson
Betsy Barbanell
Jewelle and Nathaniel J. Bickford
André Bishop
Allison M. Blinken
Beatrice and Douglas Broadwater
Alexia Brue and Ethan Klemperer
Noreen and Kenneth Buckfire
Al J. Daniel, Jr.
In memory of Beverly Tabern
Susan Dramm
Mona Dukess
In honor of Ellen Nenner
Stephen Eisdorfer
Exploring the Arts Foundation
Marilyn and Lawrence Friedland
Nomi Ghez and Michael Siegal
In honor of Susan Baker
Lynda Gould
Thomas S. Hom and Pamela Miller
Esther Horwitz
Jeannette and H. Peter Kriendler
Charitable Trust
Bruce C. Johnson
Sandra and David Joys
Elaine Kessel
Mrs. Barbara Landau
Jeanette W. Loeb
Susan MacEachron
Jill Kristin Malila

Nancy and Ernst Rothe
Douglas Schimmel and Erin Morrissey
In honor of Adèle K. Talty
Steve and Wendy Shalen
Betsey Steeger
Laurie and Paul Sturz
Hepsen Uzman
Ronald Viggiani
Svetlana and Herbert Wachtell
Elaine and Alan Weiler
Frederick Wertheim and Angelo Chan
Kenneth and Rosemary Willman
Pia and James Zankel

Paolo Martino
Anna May and Timothy Feige
Susan J. Miller and Daryl Rosenblatt
*In memory of Barbara Lyman, Jack
Morris, and Beverly Tabern*
Rochelle Nelson
Stephen A. Novick
Susan and Peter Restler
Gerald W. Richman
John Forest Roemer
Sheryl Romanoff
In honor of Judy Sloan
David Schulz
Helen Shin
Daisy Soros
Susan and Mark Stumer
*In honor of Ted Sperling and Julie
Morgan*
Thomas L. Tabern
The DuBose and Dorothy Heyward
Memorial Fund
Julie and David Tobey
Beverly Benz-Treuille
Susan and Richard Ulevitch
Sue Ann Weinberg
Earl Weiner and Suzanne Davidson
Kim Wiley-Schwartz and Andy Wiley-
Schwartz
Yvel USA INC
Judy Francis Zankel
Mark and Susan Zankel
Barbara Hope Zuckerberg

FRIENDS OF MASTERSVOICES

MEMBER (\$250-\$999)

Mr. and Mrs. Lowell R. Accola

Page Ashley

Julie Baraz

Edward Barnes

In memory of Beverly Tabern

Miriam Baron

Miranda Bass

In memory of Bob Bass

Nancy Batterman

Jennifer Bell

Evelyn Lorentzen Bell

Jaclyn Berliant

Valerie Blechar

Judi and Jay Bosworth

In honor of Susan Shine

Michael Boyas

Dr. Harold Brody

Daniel Brown

Susan and David Brownwood

Elaine Chen

Nicole Fernandez-Coffaro

Ida Cole

Kathy and Bernard Compagnon

In honor of Christopher Smeall

Mr. Jonathan F. Dzik

Katherine Eberenz

ExxonMobil

Mary Fan

Eileen Fitzgerald and Paul Rosenblum

John and Margaret Flory

Cantor Rebecca Garfein

Lynn Gilbert

Nancy Goldberg

Elise Goodman

Ruth and David Gottesman

Susan and William Groner

Erica Gruen

Joan B. Harris

Beth Holland

Lauren Jiang

Samantha Kahn

Eileen R. Kleiman and Peter Lurye

Adinah Kranzler

Carol-Marie Labozzetta

Kaarel T Laev

Gina Maria Leonetti

Linda and Morton Janklow

Michael Lonergan

Luisa Lyons

Lynn Maier

Elizabeth and Glynn Mapes

Anita K. Meltzer

Paula Mermelstein

Ron Meyers

Angela and Carl Milner

Julie K. Morgan

in memory of Beverly Tabern

Hitomi Nozawa

David Orcutt

Judith Oringer

Liliane Peck

Ann Peterson

Krasimira Petkova

Annie Pichan

Andrei Pierre

Sybil and Michael Pollet

Mikhail Pontenila

Dorothy and Robert P. Rainier

Joan Reisman-Brill

Ellen Resnick

Bradford P. Reszel

Eileen Richter

William L. and Pamela S. Richter

in honor of Emma Gaudio

Laurie Rios

John Sabatos

Beth Samuelson

Marilyn Schotz

Ira Siff

Barbara and Franklin Simon

Grant & Jacqui Smith

Annaliese Soros

Dr. Mark Spergel

Dr. Eva Sperling

Debra Sule

in honor of Jennifer Collins

Mark Sullivan
The Bagby Foundation for the Musical
Arts
Robert and Barbara Tiffany
Catherine and Alex Traykovski
Lauren Tucker
Pilar Vargas
Susan and Andrew Walter
Stephen Weber
Sandra and George Weiksner
Joan Weiner

Jacqueline M. West
in honor of Rick Elice
Carey White
Erin Winchester
Jill Melanie Wirth
Edward Yim and Erick Neher
Jaime and Christine Yordán
Emy Zener
Joseph Zimmerman and Bonnie
Rosenberg

THE ROGER REES FUND FOR MUSICAL THEATER

Lois Conway and Rick Elice,
Co-Chairs



Roger Rees was
MasterVoices' beloved

artistic associate from 2002–15. He championed the rare and the witty, the elegant and the inventive, and above all, the theatrical. This Fund (established in April 2017) will ensure our musical theater programming keeps reaching for the stars—where, we hope, it will find him. Support this initiative today at mastervoices.org/ReesFund

DONORS TO THE REES FUND

Ruth Appelhof & Gary Adamek
Susan L. Baker and Michael R. Lynch
Virginia and Randall Barbato
Edward Barnes
Christopher Barry
Kit Smyth Basquin
Nancy Dale Becker
Allison M. Blinken
Luann and David Blowers
William Bodenlos
Marsilia A. Boyle
Gerilyn Brewer & Henry Mueller
Marshall and Nina Brickman
Beatrice and Douglas Broadwater
Alexia Brue and Ethan Klemperer
Noreen and Kenneth Buckfire
Cantor Rebecca Garfein
Ken Cerniglia and Adrien Lanusse

Juliana Chen
Jesse Cohen
Joan and Jerry Cohen
Ida Cole
Jennifer Collins
Jan Constantine
Lois Conway
Alberto Criobore
Michael Cuttita
Al J. Daniel Jr.
Mary and Palmer Davis
Jennie and Richard DeScherer
Susan Dramm
Stephen Eisdorfer
Rick Elice
Faustina Corporation
Anna May Feige

Judith Ferber
Eileen Fitzgerald and Paul Rosenblum
David and Karen Fleiss
Priscilla Florindi
Ms. Sylvia Floyd
Christine and Herbert Foster
Frances Freedman
Marilyn and Lawrence Friedland
Cathy Friedman and Tom Feyer
Janie Giacomini
Nancy Gibbs
Andrew J. Goffe and Jeff Levin
Charles and Jane Goldman
Margaret Goodman
Lynda Gould
Barton Greenberg
Marilyn Grosswirth
Antonia and George J. Grumbach Jr.
Elaine Haber
Michèle Halpern
Yvonne and Kenneth Hannan Jr.
Joan Harris
Molly Heines and Tom Moloney
Matthew Hoffman and Donald
Crawshaw
Margaret Holda
Beth Holland
Thomas S Hom & Pamela Miller
Deborah L. Innes
Ms. Dana Ivey
Bruce C. Johnson
Robert Jurgrau and Marc Gollub
John Kander
Andrew and Katy Kaplan
Priscilla Kauff
Elaine Kessel
Mr. and Mrs. Robert Kessler
Arie and Corinne Kopelman
David Kotick
Jeffrey Kurnit
Ann Ledley
Sahra T. Lese
Arthur Levy
Karen Lewis
Ms. Chips Lindenmeyr
Jeanette Loeb
Vincent Machacek

Ellen Marcus
Deborah McManus
Gregory Medeiros
Angela and Carl Milner
Michael J. Moran
Paul & Shelly Nelson
Ellen B. Nenner
Marta and Fernando Nottebohm
Bruce D. Patrick
Liliane Peck
Ann Peterson
Elaine Petschek
Sybil and Michael Pollet
Deb Poppel
Amy and Jason Reed
Robert and Michele Reichstein
Ms. Joan Reisman-Brill
Ellen Resnick
Mr. and Mrs. Peter Restler
Gerald Richman
Bill and Pam Richter
Eileen Richter
Laurie P. Rios
Prof. Elihu and Susan Rose
Nancy Rosen
Nancy and Ernst Rothe
RoundTable Cultural Seminars
Lisa Rubin and Carl Mankowitz
Christie C Salomon
Seth Samuels
Beth Samuelson
Stephen Scanniello & Dane Twining
Douglas E. Schimmel and Erin
Morrisey
Marilyn Schotz
David Shengold
Susan and Bill Shine
Arthur and Beverly Shorin
Ira Siff
Barbara Simon
Judy and Morton Sloan
Kimberly Spachman
Dr. Mark Spergel
Dr Eva Sperling
Barry Stewart and Stephanie Elliott
Deborah Stiles
Virginia K Stowe

Susan and Mark Stumer
Laura and Paul Sturz
Adèle and John Talty
The Hargrove Pierce Foundation
The Walt Disney Company Foundation
Michael Thomas
Elizabeth S. Tunick
Susan and Richard Ulevitch
Ronald Viggiani

Susan S. and Kenneth L. Wallach
Joan Weiner
Earl Weiner and Suzanne Davidson
Jacqueline M. West
Kenneth and Rosemary Willman
Marshall M Wise
Eddy Wydra
Emy and Max Zener

List as of 1.7.21. Please accept our apologies if we have made an error in your listing. Please call or email us with any corrections you might have at 646.202.9623 or info@mastervoices.org. Thank You for your support!

**MYTHS AND HYMNS is presented by arrangement with Concord
Theatricals: www.concordtheatricals.com**

Lyrics for "Pegasus" and "Sisyphus" by Ellen Fitzhugh

Hymn texts from *The Temple Trio, Hymn Edition, 1886.*

Artwork created by Mikyung Lee

MYTHS AND HYMNS

