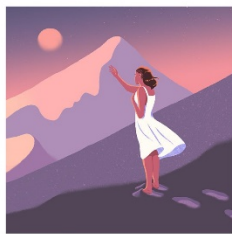
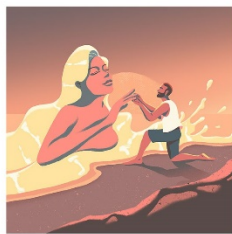
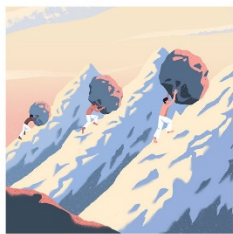


*Master* VOICES  
TED SPERLING  
ARTISTIC DIRECTOR

# MYTHS AND HYMNS



A Theatrical Song  
Cycle in a Four-Part  
Digital Series  
**CHAPTER 2**

# MYTHS and HYMNS

## Chapter 2: Work



Music and Lyrics by  
**ADAM GUETTEL**

Additional Lyrics by  
Ellen Fitzhugh

Orchestration by  
Don Sebesky and Jamie Lawrence  
New Choral Arrangements by Ted Sperling

Production Conceived, Supervised, and Conducted by  
**TED SPERLING**

Orchestra

Chuck Wilson, Ted Nash, Dan Willis, John Winder: *woodwinds*

Larry Lunetta, Tony Kadleck: *trumpet*

Steve Bargonetti: *guitar*

Douglas Romoff, Carlos Henriquez: *bass*

Norbert Goldberg, Cliff Almond: *drums*

Adam Guettel: *harmonica and guitar*

Todd Ellison, Andrew Resnick: *piano*

Ted Sperling, *conductor*

Production Team  
Derril Sellers/SpotCo, *Editing and Production*  
Jamie Lawrence, *Audio Mixing and Mastering*  
Andrew Feyer, *Chorus Audio Engineer*  
Julie Morgan, *Chorus Audio Design*  
SpotCo, *Advertising/Marketing/Social Strategy*  
Emily Grishman Music, *Music Preparation*  
Craig Burns, *Casting consultant*

---

*This performance is funded in part by the Doris Duke Charitable Foundation  
and The Roger Rees Fund for Musical Theater, as well as:*



Council on  
the Arts



**NYC** Cultural  
Affairs



---

# **WORK**

## **Up and Down and Over and Over**

**MasterVoices**

Ted Sperling, *Director*

## **Children of the Heavenly King**

**Anthony Roth Costanzo, *Soloist and Director***

*(Underwritten by Friends of Anthony\*)*

Erik Freer, *Visual Artist*

## **At the Sounding**

**Ailyn Pérez, *Soloist***

**Nicholas Phan, *Soloist***

**Anthony Roth Costanzo, *Soloist and Director***

*(Underwritten by Friends of Anthony\*)*

**MasterVoices**

Erik Freer, *Visual Artist*

\*Friends of Anthony include Susan Baker and Michael Lynch, Françoise Girard and David Knott, Elbrun and Peter Kimmelman, Helen and William Little, and Marta and Fernando Nottebohm.

## Build a Bridge

**Michael McElroy, Soloist**

Ted Sperling, *Director*

Adrienne Rogers, *Textile Artist*

Ray Charles White, *Visual Artist*

## Sisyphus

**Introduction by John Lithgow**

**Daniel Breaker, Soloist (*Sisyphus*)**

**MasterVoices**

Anne Kauffman, *Director*

Manik Choksi, *Animator*

## Life is But a Dream

**Shoshana Bean, Soloist**

Ted Sperling, *Director*

## Every Poodle

**Anthony Roth Costanzo, Soloist**

*(Underwritten by Friends of Anthony\*)*

**Ailyn Pérez, Soloist**

**Nicholas Phan, Soloist**

**MasterVoices**

Doug Fitch, *Director*

*(Underwritten by Susan Baker and Michael Lynch)*

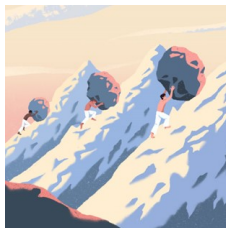
Tommy Nguyen, *Animation and Editing*

Aoshuang Zhang, *3D Design*

Yoav Gal, *Graphics Composer*

Agnes Loukine, *Digital Media Synchronization*

\*Friends of Anthony include Susan Baker and Michael Lynch, Françoise Girard and David Knott, Elbrun and Peter Kimmelman, Helen and William Little, and Marta and Fernando Nottebohm.



---

# MEET THE ARTISTS

---

## **TED SPERLING, Conductor**

One of today's leading musical artists, Tony Award-winning Maestro Ted Sperling is a classically trained musician whose 35-year career has spanned from the concert hall and the opera house to the Broadway stage. He has led such symphony orchestras as the New York Philharmonic, San Francisco Symphony, Chicago Symphony, Boston Pops, the Iceland Symphony, Czech National Symphony, and BBC Concert Orchestra. He has also served as Music Director and conductor for the revival of *My Fair Lady* at Lincoln Center Theater, and won the 2005 Tony and Drama Desk Awards for his orchestrations of Adam Guettel's *The Light in the Piazza*, for which he was also Music Director. With MasterVoices, Maestro Sperling has led acclaimed productions of rarely-heard gems as both director and conductor, including the 2018-19 season's sold-out three-performance run of *Lady in the Dark* at New York City Center. Mr. Sperling graduated *summa cum laude* from Yale University, and received the Faculty Prize at The Juilliard School. He currently teaches orchestral playing and conducting at NYU.

## **ADAM GUETTEL, Composer & Lyricist**

Adam Guettel is a composer/lyricist living in New York City. His upcoming musical, *The Days of Wine and Roses*, will have its first production on Broadway next season. Another new musical, *Millions*, is also slated for production soon. In 2019 he was nominated for a Tony Award for his score to the hit Broadway play, *To Kill a Mockingbird*. His musical, *The Light in the Piazza*, premiered on Broadway in April 2005 and went on to receive six 2005 Tony Awards including two for Mr. Guettel – Best Original Score, Best Orchestrations, and a Grammy nomination for best cast recording. *The Light in the Piazza* also received five Drama Desk Awards, including two for Mr. Guettel – Best Music and Best Orchestrations. Accolades for Mr. Guettel include the Stephen Sondheim Award (1990), the ASCAP New Horizons Award (1997), and the American Composers Orchestra Award (2005). He received an honorary doctorate from Lehman College in 2007. In 2019 he was made an honorary member of The Royal Academy of Music in London.

## **ELLEN FITZHUGH, Additional Lyrics**

Ellen Fitzhugh has received Tony (Original Score, *Grind*) and Drama Desk (Outstanding Lyrics, *Grind*) award nominations, as well as an Emmy nomination (Outstanding Achievement in Music and Lyrics, *Shining Time Station/PBS*), and written lyrics with numerous film score composers, including the renowned Henry Mancini. She is also the lyricist of several Off-Broadway musicals, including *Herringbone* ('81); *Diamonds* ('84); *The Griffin and the Minor Canon* ('88); *Paper*

*Moon* ('93); *Luck, Pluck, and Virtue* ('95); *Don Juan DeMarco* ('98); *Paradise Found* (2010); and *Just One "Q"* (librettist, 2016). She also wrote lyrics for the Disney film, *The Great Mouse Detective* ('86) and the video, *The Brave Little Toaster Goes to Mars* ('98). Ellen's recent activities include two new pieces, as librettist for *Broadbend, Arkansas* for Transport Group, with Ted Shen, and *Los Otros* for Inner Voices, with Michael John LaChiusa.

## **DON SEBESKY, Orchestration**

Don Sebesky is one of the most respected composer-arrangers in music today. His sensitivity and versatility have enabled him to produce an enormous body of work, ranging from jazz to symphonic to pop. Through his many collaborations, he has received 31 Grammy nominations (3-time winner), 3 Tony nominations (winner 2000), 2 Drama Desk Awards, 3 Emmy nominations, and 4 Clio Awards. He has worked with the London and Chicago Symphonies, Boston Pops, New York Philharmonic, Royal Philharmonic of London, and the Toronto Symphony. Theater credits include *Porgy and Bess* (London), *Sweet Charity*, *Kiss Me Kate* (2000 Tony Award), *Bells Are Ringing*, *Cyrano*, *Will Rogers Follies*, and *Sinatra At Radio City*. Besides Sinatra, Don has arranged for hundreds of other recording artists including [Streisand](#), [Bennett](#), [Buble](#), [Liza](#), [Seal](#), [Prince](#), and many more. Recordings include nine under his own name, all of which were Grammy nominated. Sebesky is the author of the orchestration textbook, *The Contemporary Arranger*.

## **JAMIE LAWRENCE, Orchestration**

Jamie Lawrence's compositions and arrangements have been honored with five Emmy Awards and ten Emmy nominations. He most recently scored the upcoming musical feature film headed to SXSW, *Best Summer Ever*. Jamie produced and orchestrated the score for the HBO documentary *Arthur Miller: Writer*, directed by Rebecca Miller and her other films, *Maggie's Plan*, *The Private Lives of Pippa Lee*, and *The Ballad of Jack and Rose*, starring Daniel Day Lewis. He has scored numerous documentary films -- many of them for HBO: *Death on a Factory Farm*, *The Alzheimer's Project - "Momentum in Science"*, and *Dealing Dogs*. Jamie is the Music Director and principal arranger for the Tony Awards broadcast and has written all the original music for the show for the past fifteen years. As an orchestrator he has penned arrangements for numerous musical luminaries: Jessye Norman, Quincy Jones, Smokey Robinson, Audra McDonald, and Herbie Hancock.

# **Down and Up and Over and Over**

## **MASTERSVOICES**

MasterVoices (formerly The Collegiate Chorale) was founded in 1941 by legendary American choral conductor Robert Shaw and has been under the artistic direction of Tony Award-winner Ted Sperling since 2013. Known for its versatility, the group's

repertoire ranges from choral masterpieces and operas in concert to operettas and musical theater. It is also known for highly theatrical performances of rarely heard works such as *Lady in the Dark* by Kurt Weill and Ira Gershwin, Scott Joplin's *Treemonisha* and Rossini's *Moïse et Pharaon*. As the country's first interracial and interfaith chorus, the group performed at the opening of the United Nations and has sung and recorded with esteemed conductors including Arturo Toscanini, Leonard Bernstein and Zubin Mehta. Concerts regularly feature world-class soloists including Anthony Roth Costanzo, Bryn Terfel, Deborah Voigt, Eric Owens, Kelli O'Hara, and Victoria Clark, along with collaborations with such creative minds as Vogue Editor-at-Large Hamish Bowles and acclaimed choreographer Doug Varone. Roger Rees was the group's Artistic Associate from 2003–2015.

## Children of the Heavenly King

### **ANTHONY ROTH COSTANZO**, *Soloist and Director*

Anthony Roth Costanzo has appeared with many of the world's leading opera houses including the Metropolitan Opera, Lyric Opera of Chicago, San Francisco Opera, English National Opera, Houston Grand Opera, Opera Philadelphia, Los Angeles Opera, Canadian Opera Company, Glyndebourne Opera Festival, Dallas Opera, and Teatro Real Madrid. In concert he has sung with the New York Philharmonic, Berlin Philharmonic, San Francisco Symphony, London Symphony Orchestra, Cleveland Orchestra, and National Symphony Orchestra, among others. He has performed at a wide-ranging variety of venues including Carnegie Hall, Versailles, The Kennedy Center, The Metropolitan Museum of Art, National Sawdust, Joe's Pub, The Guggenheim, The Park Avenue Armory, and Madison Square Garden. Costanzo has begun working as a producer and curator in addition to a performer, creating projects for The New York Philharmonic, National Sawdust, Opera Philadelphia, the Philharmonia Baroque, Princeton University, WQXR, The State Theater in Salzburg, Master Voices and Kabuki-Za Tokyo. Costanzo graduated from Princeton University and received his masters from Manhattan School of Music.

### **ERIK FREER**, *Visual Artist*

Erik Freer is an American graphic designer, visual artist, director, and writer. Freer works collaboratively within art and design at the intersection of culture, technology, and commerce. He is Design Director at Neue Galerie New York, Museum of German and Austrian Art in Manhattan, and has served as lecturer and guest critic at The New School, School of Visual Arts, Pratt Institute and Yale University. Freer received his M.F.A. from the Yale University School of Art, B.A. from Eugene Lang College, and B.F.A. from Parsons School of Design.

# At the Sounding

## **AILYN PÉREZ, Soloist**

Hailed by the New York Times as “a beautiful woman who commands the stage” and “a major soprano,” Ailyn Pérez is in demand at the world’s leading opera houses and cultural capitals. She won the 2012 Richard Tucker Award, thereby becoming the first Hispanic recipient in the award’s 35-year history. Notable engagements of the current season include Ailyn’s highly anticipated role debut as Magda in Puccini’s *La Rondine* at the Teatro del Maggio Musicale Fiorentino, which she reprises in concert with Teatro di San Carlo. Ms. Pérez stars in a new production of Verdi’s *Falstaff* by Mateja Koležnik at the Bayerische Staatsoper. In concert, she will be featured as the soprano soloist in Saint-Saëns’ *Oratorio de Noël* with the Bayerisches Staatsorchester, conducted by Antonello Manacorda, and she sings a selection of arias under the baton of Lorenzo Viotti with the Gulbenkian Orchestra.

## **NICHOLAS PHAN, Soloist**

Hailed “one of the world’s most remarkable singers” (Boston Globe), American tenor Nicholas Phan is increasingly recognized as an artist of distinction. He performs regularly with the world’s leading orchestras and opera companies, and with a repertoire spanning nearly 500 years, is also an avid recitalist and advocate for art song and vocal chamber music. He co-founded Collaborative Arts Institute of Chicago, devoted to promoting this underserved repertoire. Phan’s album *Clairières*, songs by Lili and Nadia Boulanger, was nominated for a 2021 Grammy Award, and his album, *Gods and Monsters*, was nominated for a 2018 Grammy. His discography also includes a Grammy-nominated recording of *Pulcinella* with Pierre Boulez and the Chicago Symphony. Phan has created programs for broadcast on WFMT and WQXR and served as guest curator for projects with the Philadelphia Chamber Music Society, Laguna Beach Music Festival, Apollo’s Fire, and San Francisco Performances. His programs often examine themes of identity, highlight underrepresented voices from history, and strive to underline the relevance of music from all periods to the currents of today.

[www.nicholas-phan.com](http://www.nicholas-phan.com)

# Build a Bridge

## **MICHAEL McELROY, Soloist**

Michael appeared on Broadway in: *Sunday in the Park with George* (2017 revival), *Disaster!* (Vocal arranger), *Next To Normal*, *Rent*, *The Wild Party*, *Big River* (Tony Nomination), *The Who’s Tommy*, *Miss Saigon*, *Patti LuPone on Broadway*, *Street Corner Symphony* (vocal arranger), and *High Roller Social Pleasure Club*. New York



Philharmonic: *Candide*. National Tour: *Next to Normal*, *Rent*, *Big River Sarafina*. Off-Broadway: *Some Men* (Second Stage Theater), *Blue* (Roundabout), *Violet* (Original Cast, Playwrights Horizons, Drama Desk Nomination), *Thunder Knocking on the Door* (Minetta Lane), *Richard III* (NYSF). Michael is the Founder/Musical Director of Broadway Inspirational Voices (BIV). In 2019 Michael accepted the Tony Award Honor for Excellence in the Theater on behalf of BIV from the American Theater Wing. Michael was nominated for a Grammy in 2005 for *Joy to the World* arrangement of BIV's first holiday CD, *Great Joy: A Gospel Christmas*. Michael is Associate Arts Professor in the New Studio on Broadway Musical Theater Acting Studio in Undergraduate Drama at Tisch School of the Arts. He is also Director of Diversity Initiatives for Undergraduate Drama Department. He received his BFA in Drama from Carnegie Mellon and was just awarded the 2020 Alumni Achievement Award. Michael is a 2021 Artist In Residence for the inaugural year of Little Island and a founding member of Black Theatre United ([blacktheatreunited.com](http://blacktheatreunited.com)).

## **ADRIENNE ROGERS, Textile Artist**

The creative possibilities inherent in hand-knitting have always intrigued Adrienne Rogers. She develops works that are rooted in tradition but have a modern aesthetic. She strives to create works that elicit a visceral response and can stand alone as objects of enduring beauty. Rogers' approach to knitting is at once avant-garde and primal. The muted colors and rich textures seem drawn from nature: the surface of water, river rocks, and cloudscapes. Her designs emphasize the spare beauty of repeating geometric shapes. Her pieces have appeared in *Town and Country*, *Architectural Digest*, *Vogue Living Australia*, *Selvedge* and *Interiors*. She has exhibited with the Harrison Gallery in Williamstown, Massachusetts and The Textile Study Group of New York. She was interviewed on National Public Radio's *Leonard Lopate Show*. Her work is included in international contemporary craft collections. She received awards at the Smithsonian Craft Show and the British Crafts Council show, Origin.

## **RAY CHARLES WHITE, Visual Artist**

Subtly breaking with the traditional ideas of photography, White's work incorporates ephemeral and transient moments often within nature shifting between representation and abstraction. His work explores the conventions and constraints of photography while asking questions about time, memory, and subjectivity. Former curator of the Metropolitan Museum of Art, Henry Geldzahler, wrote: "It was David Hockney, who, in many sessions of working and talking, emphasized to Ray that one of the true subjects of photography is the ebb and flow of the life of the moment, the continuum of time and space in which photographer and subject find themselves." White studied at both the School of Visual Arts and The New School for Social Research in New York City. White's work has been exhibited widely and is included in the collections of the Tate Gallery, Dia Art Foundation, and the Norton Museum of Art.

# Sisyphus

## **JOHN LITHGOW**, *Introduction*

John Lithgow has long been regarded as one of America's most distinguished performers. He has made an indelible impression on audiences with his work in film, television, and the theater. Lithgow is a prolific actor with two Tonys, six Emmys, two Golden Globes, and two Oscar nominations. He has starred in the hit TV series *3rd Rock from the Sun*, *Dexter*, and *The Crown*, and in critically acclaimed films such as *The World According to Garp*, *Terms of Endearment* and *Bombshell*. On stage, he has appeared in over twenty Broadway productions including *The Changing Room*, *M. Butterfly*, and most recently, *Hillary and Clinton*. Last year, he starred in HBO's *Perry Mason* and is in the upcoming FX drama series *The Old Man*. In addition to the *New York Times* bestsellers *Dumpty* and *Trumpty Dumpty Wanted a Crown*, he has written several best-selling children's picture books and an acclaimed memoir, *Drama, an Actor's Education*. His recordings for kids have landed him four Grammy nominations.

## **DANIEL BREAKER**, *Sisyphus*

Daniel Breaker is best known to Broadway audiences for his portrayals of Donkey in *Shrek the Musical* and the leading role in *Stew's Passing Strange*. He was nominated for the Tony and Drama Desk Awards for these performances and won the Obie Award for *Passing Strange*. He also played Aaron Burr in *Hamilton* on Broadway and Chicago. His TV appearances include guest roles on *Billions*, *The Unbreakable Kimmie Schmidt* and *Mozart in the Jungle*. Daniel has appeared off-Broadway at the Public Theater, Lincoln Center Theater, Playwrights Horizons, and Second Stage, and has appeared frequently at South Coast Rep and the Shakespeare Theatre Company in Washington, DC. A graduate of the Juilliard School, Daniel is married to director Kate Whoriskey.

## **ANNE KAUFFMAN**, *Director*

ANNE KAUFFMAN: *Fire in My Mouth* (New York Philharmonic), *The Lucky Ones* (Ars Nova), *Hundred Days* (NYTW, Under the Radar Festival/The Public Theater, La Jolla Playhouse, Z Space, The Know Theater), *Mary Jane* (NYTW & Yale Rep), *Assassins* (Encores! Off-Center), [Marjorie Prime](#) (Lortel Nomination, Drama League Nomination); *Detroit*, *Maple and Vine* (Playwrights Horizons); *The Nether*, *Smokefall* (MCC); *Buzzer* (The Public); *You Got Older* (Drama Desk Nomination, P73 Productions); *Somewhere Fun*, *God's Ear* (New Georges and Vineyard Theater); *Stunning*, *Slowgirl* (LCT3). She is the Artistic Director of Encores! Off Center, Resident Director at Roundabout Theater, Artistic Associate and Founding Member of The Civilians, a Clubbed Thumb Associate Artist and co-creator of the CT Directing Fellowship, a New Georges Associate Artist, an SDC Executive Board Member and Trustee of SDCF. Kauffman's awards include three Obies, the Joan and Joseph Cullman Award, the Alan Schneider Director Award, a Lucille Lortel Award, and the Joe A. Callaway.

## **MANIK CHOKSI, Animator**

Manik Choksi is an actor, musician, and animator. Broadway: *Great Comet*. Off-Broadway: *Great Comet*, *Ars Nova*; *Indian Ink*, *Roundabout*; *Bunty Berman Presents* (Lortel Nomination), *New Group*; *God Bless You Mr. Rosewater*, *Encores!*; *King Tot and D*, *Deb*, *Debbie*, *Deborah*, *Clubbed Thumb*; *Huck & Holden*, *Cherry Lane*. Regional: *Moby Dick* and *Moby Dick*, A.R.T.. Film/TV: *Unbreakable Kimmy Schmidt*; *New Amsterdam*; *Good Fight*; *Mindhunter*; *Elementary*; "Happyish"; *One Life To Live* (Vimal Patel), *Home*, *Passing Season*. Composer: *The Ramayan* (Artist in Residence at *Ars Nova*), *Those Lost Boys*, *Food Odyssey*, *3LD*. Education: The Juilliard School.

## **Life Is But a Dream**

## **SHOSHANA BEAN, Soloist**

Shoshana Bean's four independent solo releases have topped the iTunes charts in the US and UK in peak positions including #1, and her latest release *Spectrum* landed her at #1 on the Billboard Jazz Charts. Shoshana has sold out solo concerts around the globe, lent her voice to countless films and television shows, amassed millions of views on YouTube, toured with Postmodern Jukebox, performed alongside David Foster, Ariana Grande, Brian McKnight and sang backup for Michael Jackson for his 30th anniversary concert at Madison Square Garden. She arranged vocals for Jennifer Lopez's *American Idol* performance of *I Luh Ya Papi*, and her music has been featured in television shows on NBC, MTV, Oxygen, Bravo and Showtime. Bean made her Broadway debut in the original cast of *Hairspray* and starred as the very first replacement for Elphaba, the green-skinned witch, in *Wicked*. Most recently, she starred as Jenna in *Waitress*, Fanny Brice in *Funny Girl* and Cee-Cee Bloom in the new musical adaptation of *Beaches*, for which she earned a Jeff Award Nomination for best lead actress in a musical.

## **Every Poodle**

## **DOUG FITCH, Director**

Doug Fitch is a visual artist working in media including architecture, opera, puppetry, sustenance, and design. Philadelphia-born, he graduated in Visual Studies from Harvard University, studied cooking at La Varenne in Paris and design at Institut d'Architecture et d'Etudes Urbaines in Strasbourg. He has mounted projects for major institutions across North America and Europe. Career highlights include the 2010 production of Ligeti's *Le Grand Macabre* for the New York Philharmonic and

remounted at Hamburg's ElbPhilharmonie; Janáček's *The Cunning Little Vixen* for NY Phil; *Hansel and Gretel* at LA Opera; *Turandot* at Santa Fe Opera; *Gloria, A Pig Tale* at The Metropolitan Museum of Art. Fitch also created a series of multi-sensory experiences ("Orphic Feasts"), featured in the book *Orphic Fodder: Experiments in Dining*. Fitch is also an architectural designer, designing homes and furniture, often for musicians, including Joshua Bell and Alan Gilbert. He wrote the books *Organs of Emotion* and *With Skin and Hair*. He lives in New York, working as a visual artist, designer, and director.

## **TOMMY NGUYEN, Animation and Editing**

California born Brooklyn based artist who has shown internationally. Recently a fellow at the Kunststiftung Sachsen-Anhalt, he creates installations and happenings that reimagine our infinities of possibilities. He is a frequent collaborator with the artist, designer, and director Doug Fitch. Together they are currently working on a documentary performance, *Viktor and Charley*, and a Vietnamese Water Puppet show. He teaches sculpture and animation at Pace University and is a video and effects mentor at the Pace Performing Arts theatre program.

## **AOSHUANG ZHANG, 3D Design**

Aoshuang Zhang is a visual artist based between New York and Beijing who is passionate about new forms of storytelling. She has worked across a variety of media including theatre, film, installation, and visual programming. Aoshuang thrives in collaborative environments and strives to create experimental immersive experiences. She holds a BA, MFA, and Ph.D. from Beijing's Central Academy of Drama and is the first Mainland Chinese student to graduate from NYU Tisch Design for Stage & Film (MFA). She is the Artist-In-Residence of the NYU Future Reality Lab.

## **YOAV GAL, Graphics Compositor**

Yoav Gal is a composer of operas and musical plays, designer of toys, and father of two. His work is available at [you.theater](http://you.theater).

## **AGNES LOUKINE, Digital Media Synchronization**

Agnes Loukine is an up-and-coming artist who works with almost anything she can make art out of. She has a side in tech theater for stage management, lighting design, and prop making.



---

# MASTER VOICES BOARD OF DIRECTORS

Juliana Chen, *Co-Chair*  
Deborah F. Stiles, *Co-Chair*  
Ellen F. Marcus, *Vice-Chair*

Susan Shine, *Vice-Chair*  
Elizabeth Tunick, *Secretary*  
Lois Conway, *Treasurer*

Martina Arroyo  
Susan L. Baker  
Susan H. Dramm  
Kenneth H. Hannan, Jr.  
Matthew D. Hoffman  
Deborah Innes  
Robert Jurgrau

Richard J. Miller  
Ellen B. Nenner  
Bruce Patrick  
Lisa Rubin  
Adèle K. Talty  
Lauren Tucker

**Directors Emeriti**  
Nancy Dale Becker  
Robert Becker,  
*In Memoriam*  
Anna de Peyster  
George J. Grumbach Jr.  
William H. Mann,  
*In Memoriam*  
James Marcus,  
*In Memoriam*  
Christie Salomon

## ADVISORY COUNCIL

Norman S. Benzaquen  
André Bishop  
Sammi Cannold  
Christopher Clark  
Victoria Clark  
Josh Cogswell  
Amber Efé  
Rick Elice  
Martin Engstroem  
Judith Messina Fleischer  
Nathan Gunn  
Steve Novick

Kelli O'Hara  
Alan Pierson  
Bruce Pomahac  
Matthew Principe  
Bartlett Sher  
Ira Siff  
Sarah Billinghamurst Solomon  
Daisy Soros  
Bernard Telsey  
Deborah Voigt  
Kim Wiley-Schwartz  
Judy Francis Zankel

## SINGERS COUNCIL

Susan Shine, *President*  
Ronny Viggiani, *Vice President*  
Sybil H. Pollet, *Secretary*

Marsilia Boyle  
Gerilyn Brewer  
Jan Constantine  
Al Daniel  
Mary Fan  
Miriam Levy

Luisa Lyons  
Ron Meyers  
Judith Oringer  
Andrei Pierre  
Deb Poppel  
Vivianne Potter

Eileen Richter  
Lisa Rubin  
Costas Tsourakis  
Lauren Tucker  
Stephen Weber

# MASTERSVOICES ADMINISTRATION

Ted Sperling, *Artistic Director*

Jennifer Collins, *Executive Director*

Julie Morgan, *Associate Conductor & General Manager*

Christopher Judd, *Development Manager & Artistic Associate*

Geneva Lyman, *Marketing & Engagement Coordinator*

Victor Velazquez, *Artistic & Operations Assistant*

Rachel Colbert, *Development Consultant*

Pascal Nadon, *Publicist*

James Bonkovsky, *Institutional Giving Manager*

# MASTERSVOICES CHORUS

Adèle Talty

Al Daniel

Becca Hare

Bonnie Rosenberg

Bruce Patrick

Carey White

Carol-Marie Labozzetta

Cathy Friedman

Chris Smeall

Clelia Parisi

Daniel Ryave

Deb Poppel

Deborah Innes

Diann Witt

Eileen Richter

Elise Simon Goodman

Ellen Resnick

Emy Zener

Gerilyn Brewer

Hannah Livant

Helen Shin

Jackie Berliant

Jan Constantine

Jennifer Bell

Jennifer Daure

Jessica DeGennaro

Jill Melanie Wirth

Joan Harris

Joan Reisman-Brill

Jodi Greenspan

John Sabatos

John Van Antwerp

Joseph Zimmerman

Judith Oringer

Julie Baraz

Katherine Eberenz

Katrina Fisher

Ken Moore

Kit Smyth Basquin

Lauren Tucker

Lisa Rubin

Luisa Lyons

Mark Ahramjian

Mark Spergel

Marsilia Boyle

Mary Fan

Michael Boyas

Michelle Guidas

Nancy Batterman

Nancy Good

Natasha Perry-Love

Nicole Fernandez-Coffaro

Nina Hennessey

Robert Reichstein

Ronny Viggiani

Samantha Kahn

Shelly Nelson

Stephanie Scuderi

Stephen Weber

Steve Eisdorfer

Sue Dramm

Susan Shine

Susan Stumer

Susan Rubin

Tammilyn Kim

Thomas Hom

Valerie Blechar

Victor Velazquez

Vivianne Potter

---

# MASTERVOICES SUPPORTERS

## **MYTHS AND HYMNS SCREENING EVENT SUPPORTERS**

### **Project Sponsors:**

Susan Baker and Michael Lynch, Jan Constantine, Lois Conway, Matthew D. Hoffman and Donald R. Crawshaw, Robert Jurgrau and Marc Gollub, Ellen F. Marcus, Bruce Patrick, Adèle K. and John Talty

### **Project Hosts:**

Virginia N. and Randall J. Barbato, Kit Smyth Basquin, Gerilyn Brewer and Henry Mueller, Noreen and Kenneth Buckfire, Juliana Chen, Susan Dramm, Ann Fabian and Christopher Smeall, Cathy J. Friedman, Kelly and André Hunter, Deborah Innes, Bruce C. Johnson, Lorraine LaHuta, Cara Lown, John Kenneth Moore, Ellen B. Nenner, Lisa Rubin and Dr. Carl Mankowitz, Gerald W. Richman, Nancy and Ernst Rothe, Christie C. Salomon, Helen Shin, Susan Shine, Judith and Morton Sloan, Betsey Steeger, Deborah Stiles, Elizabeth Tunick, Dane Twining and Stephen Scanniello, Susan and Richard Ulevitch, Kara Unterberg, Ronny Viggiani and Michael Marino

## **MASTEROICES SEASON SUPPORTERS**

### **MASTEROICES MAESTRO'S CIRCLE**

#### **LEADER** (\$50,000 and above)

Susan Baker and Michael Lynch  
Roxanne Brandt  
Rick Elice  
Mr. and Mrs. Kenneth H.  
and Yvonne S. Hannan

Howard Gilman Foundation  
Ellen F. Marcus  
Ellen B. Nenner  
Bruce Patrick

#### **CONDUCTOR** (\$25,000-\$49,999)

Lois Conway  
Donald R. Crawshaw and  
Matthew D. Hoffman  
Doris Duke Charitable Foundation

New York State Council on the Arts  
Robert Jurgrau and Marc Gollub  
Deborah F. Stiles  
Adèle K. and John Talty  
Susan S. and Kenneth L. Wallach

#### **BENEFACTOR** (\$10,000 - \$24,999)

Kit Smyth Basquin  
Nancy Dale Becker  
Gerilyn Brewer and Henry Mueller  
Juliana Chen  
Con Edison  
Jan Constantine

Zita Ezpeleta and Kewsong Lee  
Cathy J. Friedman and Thomas R.  
Feyer  
Antonia and George Grumbach  
Himan Brown Charitable Trust  
Deborah L. Innes

Lawrence Madison  
*In honor of Julie Morgan and  
Jennifer Collins*  
Morton Williams Supermarkets  
National Endowment for the Arts  
NYC Department of Cultural Affairs  
New York Foundation for Eldercare  
Dr. Robert Reichstein  
Lisa Rubin and Dr. Carl Mankowitz

Christie C. Salomon  
Susan Shine  
Judith and Morton Sloan  
Sarah and Howard Solomon  
Barry Stewart and Stephanie Elliott  
The Gilder Foundation  
The Hargrove Pierce Foundation  
Elizabeth S. Tunick

**CIRCLE MEMBER (\$5,000 - \$9,999)**

Ann and Gordon Getty Foundation  
Rima Ayas and Ronald Moore  
Gini and Randy Barbato  
Marsilia Boyle  
Josh Cogswell and Justin Daniel  
Colgate-Palmolive ICE Fund  
Jennifer Collins  
Jennie and Richard DeScherer  
Elayne and Howard Friedman Fund  
Nancy and Neil Humphreys  
Kelly and Andre Hunter  
*In honor of Adèle K. Talty*

Fern K. Hurst  
*In honor of Lois Conway*  
Jephson Educational Trust  
Karen and Kevin Kennedy  
Richard and Carol Miller  
Samir Nikocevic  
Pfizer Foundation  
Deb Poppel  
Susan and Elihu Rose  
The Arthur and Mae Orvis Foundation  
Dane Twining and Stephen Scanniello

**MASTERSVOICES PATRON PROGRAM**

**PATRON (\$2,500-\$4,999)**

Henry and Karin Barkhorn  
Arlene Berrol  
John A. Bult and Oliver Chen  
*In honor of Matthew Hoffman*  
Judy and Anthony Evnin  
Ann Fabian and Christopher Smeall  
David and Karen Fleiss  
Beth and Gary Glynn  
Mr. Andrew J. Goffe and Mr. Jeff Levin  
Molly K. Heines and Thomas J.  
Moloney  
Bruce Horten and Aaron Lieber  
*In honor of Ellen Marcus*  
Andrew Kaplan & Kate Winship  
Kaplan  
Nancy Karch  
Priscilla Kauff  
Enid and Robert Kay  
Lorraine Lahuta

Dayna K Langfan and Lawrence Heller  
Miriam Levy  
Cara Lown and Mark Gertler  
Judy Messina  
John Kenneth Moore  
Marta and Fernando Nottebohm  
Rachel Pront  
Nancy and Ernst Rothe  
Douglas Schimmel and Erin Morrissey  
*In honor of Adèle K. Talty*  
Steve and Wendy Shalen  
Betsey Steeger  
Laurie and Paul Sturz  
Hepsen Uzman  
Ronald Viggiani  
Svetlana and Herbert Wachtell  
Elaine and Alan Weiler  
Frederick Wertheim and Angelo Chan  
Kenneth and Rosemary Willman  
Pia and James Zankel



**ASSOCIATE (\$1,000-\$2,499)**

Lorraine and Curt Anastasio

*In honor of Lisa Rubin*

Carol Atkinson

Betsy Barbanell

Jewelle and Nathaniel J. Bickford

André Bishop

Allison M. Blinken

Beatrice and Douglas Broadwater

Alexia Brue and Ethan Klemperer

Noreen and Kenneth Buckfire

Al J. Daniel, Jr.

*In memory of Beverly Tabern*

Susan Dramm

Mona Dukess

*In honor of Ellen Nenner*

Stephen Eisdorfer

Exploring the Arts Foundation

Marilyn and Lawrence Friedland

Nomi Ghez and Michael Siegal

*In honor of Susan Baker*

Lynda Gould

Thomas S. Hom and Pamela Miller

Esther Horwitz

Jeannette and H. Peter Kriendler

Charitable Trust

Bruce C. Johnson

Sandra and David Joys

Elaine Kessel

Mrs. Barbara Landau

Jeanette W. Loeb

Susan MacEachron

Jill Kristin Malila

Paolo Martino

Anna May and Timothy Feige

Susan J. Miller and Daryl Rosenblatt

*In memory of Beverly Tabern,*

*Barbara Lyman, and Jack*

*Morris Silverman*

Rochelle Nelson

Stephen A. Novick

Susan and Peter Restler

Gerald W. Richman

John Forest Roemer

Sheryl Romanoff

*In honor of Judy Sloan*

David Schulz

Helen Shin

Daisy Soros

Susan and Mark Stumer

*In honor of Ted Sperling and Julie*

*Morgan*

Thomas L. Tabern

The DuBose and Dorothy Heyward

Memorial Fund

Julie and David Tobey

Beverly Benz-Treuille

Susan and Richard Ulevitch

Kara Unterberg

Sue Ann Weinberg

Earl Weiner and Suzanne Davidson

Kim Wiley-Schwartz and Andy

Wiley-Schwartz

Yvel USA INC

Judy Francis Zankel

Mark and Susan Zankel

Barbara Hope Zuckerberg

# FRIENDS OF MASTERVOICES

## MEMBER (\$250-\$999)

Mr. and Mrs. Lowell R. Accola

Page Ashley

Julie Baraz

Edward Barnes

*In memory of Beverly Tabern*

Miriam Baron

Miranda Bass

*In memory of Bob Bass*

Nancy Batterman

Jennifer Bell

Evelyn Lorentzen Bell

Jaclyn Berliant

Valerie Blechar

Judi and Jay Bosworth

*In honor of Susan Shine*

Michael Boyas

Dr. Harold Brody

Daniel Brown

Susan and David Brownwood

Elaine Chen

Nicole Fernandez-Coffaro

Ida Cole

Kathy and Bernard Compagnon

*In honor of Christopher Smeall*

Mr. Jonathan F. Dzik

Katherine Eberenz

ExxonMobil

Mary Fan

Eileen Fitzgerald and Paul Rosenblum

John and Margaret Flory

Cantor Rebecca Garfein

Lynn Gilbert

Nancy Goldberg

John Goldsborough and Julia Stein

Elise Goodman

Ruth and David Gottesman

Marshall Grant

Jodi Greenspan

Susan and William Groner

Erica Gruen

Joan B. Harris

Jeremy Henderson

Cecilia Hobbs

Margaret Holda

*In honor of Adèle K. Talty*

Beth Holland

Linda and Morton Janklow

Lauren Jiang

Sue-Ellen Johnson

Samantha Kahn

Eileen R. Kleiman and Peter Lurye

*In honor of Lisa Rubin*

Adinah Kranzler

Carol-Marie Labozzetta

Kaarel T Laev

Gina Maria Leonetti

Carolyn Lewis

Michael Lonergan

Luisa Lyons

Lynn Maier

Elizabeth and Glynn Mapes

Anita K. Meltzer

Paula Mermelstein

Ron Meyers

Angela and Carl Milner

Julie K. Morgan

*in memory of Beverly Tabern*

Kenneth and Cookie Neil

Hitomi Nozawa

David Orcutt

Judith Oringer

Liliane Peck

Ann Peterson

Krasimira Petkova

Annie Pichan

Andrei Pierre

Sybil and Michael Pollet

Mikhail Pontenila

Dorothy and Robert P. Rainier

Joan Reisman-Brill

Ellen Resnick

Bradford P. Reszel

Eileen Richter

William L. and Pamela S. Richter

*in honor of Emma Gaudio*

Laurie Rios  
Jeffrey and Marjorie Rosen  
John Sabatos  
Catherine Samuels  
Dorothy J. Samuels  
Beth Samuelson  
Marilyn Schotz  
Robert Schwartz  
Ira Siff  
Barbara and Franklin Simon  
Grant & Jacqui Smith  
Annaliese Soros  
Dr. Mark Spergel  
Dr. Eva Sperling  
Debra Sule  
*in honor of Jennifer Collins*  
Mark Sullivan  
The Bagby Foundation for the Musical  
Arts

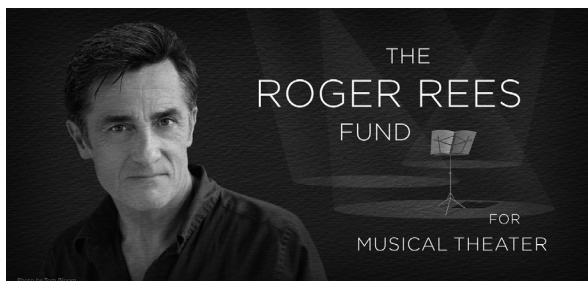
Robert and Barbara Tiffany  
Catherine and Alex Traykovski  
Lauren Tucker  
Pilar Vargas  
Susan and Andrew Walter  
Stephen Weber  
Sandra and George Weiksner  
Joan Weiner  
Jacqueline M. West  
*in honor of Rick Elice*  
Carey White  
Erin Winchester  
Jill Melanie Wirth  
Edward Yim and Erick Neher  
Jaime and Christine Yordán  
Emy Zener  
Joseph Zimmerman and Bonnie  
Rosenberg

## THE ROGER REES FUND FOR MUSICAL THEATER

**Lois Conway and Rick Elice,  
Co-Chairs**

Roger Rees was  
MasterVoices' beloved

artistic associate from 2002–15. He championed the rare and the witty, the elegant and the inventive, and above all, the theatrical. This Fund (established in April 2017) will ensure our musical theater programming keeps reaching for the stars—where, we hope, it will find him. Support this initiative today at [mastervoices.org/ReesFund](https://mastervoices.org/ReesFund)



## DONORS TO THE REES FUND

Ruth Appelhof & Gary Adamek  
Susan L. Baker and Michael R. Lynch  
Virginia and Randall Barbato  
Edward Barnes  
Christopher Barry  
Kit Smyth Basquin  
Nancy Dale Becker  
Allison M. Blinken  
Luann and David Blowers

William Bodenlos  
Marsilia A. Boyle  
Gerilyn Brewer & Henry Mueller  
Marshall and Nina Brickman  
Beatrice and Douglas Broadwater  
Alexia Brue and Ethan Klemperer  
Noreen and Kenneth Buckfire  
Cantor Rebecca Garfein  
Ken Cerniglia and Adrien Lanusse

Juliana Chen  
Jesse Cohen  
Joan and Jerry Cohen  
Ida Cole  
Jennifer Collins  
Jan Constantine  
Lois Conway  
Alberto Cribiore  
Michael Cuttita  
Al J. Daniel Jr.  
Mary and Palmer Davis  
Jennie and Richard DeScherer  
Susan Dramm  
Stephen Eisdorfer  
Rick Elice  
Faustina Corporation  
Anna May Feige  
Judith Ferber  
Eileen Fitzgerald and Paul Rosenblum  
David and Karen Fleiss  
Priscilla Florindi  
Ms. Sylvia Floyd  
Christine and Herbert Foster  
Frances Freedman  
Marilyn and Lawrence Friedland  
Cathy Friedman and Tom Feyer  
Janie Giacomini  
Nancy Gibbs  
Andrew J. Goffe and Jeff Levin  
Charles and Jane Goldman  
Margaret Goodman  
Lynda Gould  
Barton Greenberg  
Marilyn Grosswirth  
Antonia and George J. Grumbach Jr.  
Elaine Haber  
Michèle Halpern  
Yvonne and Kenneth Hannan Jr.  
Joan Harris  
Molly Heines and Tom Moloney  
Matthew Hoffman and Donald  
Crawshaw  
Margaret Holda  
Beth Holland  
Thomas S Hom & Pamela Miller  
Deborah L. Innes  
Ms. Dana Ivey

Bruce C. Johnson  
Robert Jurgrau and Marc Gollub  
John Kander  
Andrew and Katy Kaplan  
Priscilla Kauff  
Elaine Kessel  
Mr. and Mrs. Robert Kessler  
Arie and Corinne Kopelman  
David Kotick  
Jeffrey Kurnit  
Ann Ledley  
Sahra T. Lese  
Arthur Levy  
Karen Lewis  
Ms. Chips Lindenmeyr  
Jeanette Loeb  
Vincent Machacek  
Ellen Marcus  
Deborah McManus  
Gregory Medeiros  
Angela and Carl Milner  
Michael J. Moran  
Paul & Shelly Nelson  
Ellen B. Nenner  
Marta and Fernando Nottebohm  
Bruce D. Patrick  
Liliane Peck  
Ann Peterson  
Elaine Petschek  
Sybil and Michael Pollet  
Deb Poppel  
Amy and Jason Reed  
Robert and Michele Reichstein  
Ms. Joan Reisman-Brill  
Ellen Resnick  
Mr. and Mrs. Peter Restler  
Gerald Richman  
Bill and Pam Richter  
Eileen Richter  
Laurie P. Rios  
Prof. Elihu and Susan Rose  
Jeffrey and Marjorie Rosen  
Nancy Rosen  
Nancy and Ernst Rothe  
RoundTable Cultural Seminars  
Lisa Rubin and Carl Mankowitz  
Christie C Salomon

Seth Samuels  
Beth Samuelson  
Stephen Scanniello & Dane Twining  
Douglas E. Schimmel and Erin  
Morrisey  
Marilyn Schotz  
David Shengold  
Susan and Bill Shine  
Arthur and Beverly Shorin  
Ira Siff  
Barbara Simon  
Judy and Morton Sloan  
Kimberly Spachman  
Dr. Mark Spergel  
Dr Eva Sperling  
Barry Stewart and Stephanie Elliott  
Deborah Stiles  
Virginia K Stowe

Susan and Mark Stumer  
Laura and Paul Sturz  
Adèle and John Talty  
The Hargrove Pierce Foundation  
The Walt Disney Company Foundation  
Michael Thomas  
Elizabeth S. Tunick  
Susan and Richard Ulevitch  
Ronald Viggiani  
Susan S. and Kenneth L. Wallach  
Joan Weiner  
Earl Weiner and Suzanne Davidson  
Jacqueline M. West  
Kenneth and Rosemary Willman  
Marshall M Wise  
Eddy Wydra  
Emily and Max Zener

*List as of 2.15.21. Please accept our apologies if we have made an error in your listing. Please call or email us with any corrections you might have at 646.202.9623 or [info@mastervoices.org](mailto:info@mastervoices.org). Thank You for your support!*

**MYTHS AND HYMNS is presented by arrangement with Concord  
Theatricals: [www.concordtheatricals.com](http://www.concordtheatricals.com)**

“Myths and Hymns” was originally recorded by  
Nonesuch Records. Used by permission.  
Lyrics for "Pegasus" and "Sisyphus" by Ellen Fitzhugh  
Hymn texts from *The Temple Trio, Hymn Edition, 1886*.  
Artwork created by Mikyung Lee

# MYTHS AND HYMNS

